

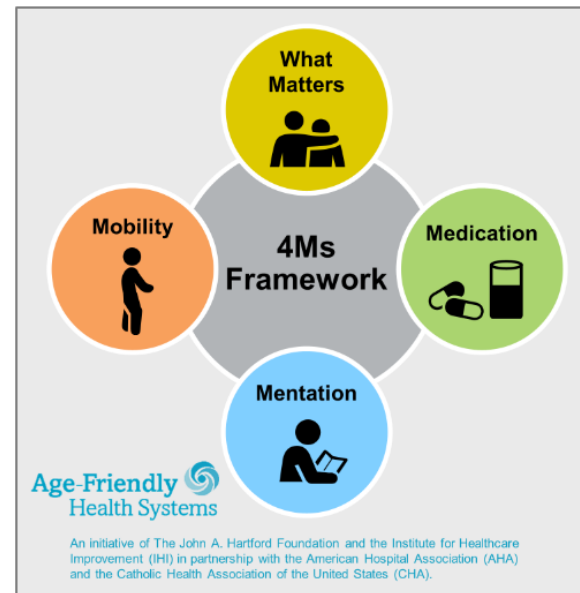
*Socialization and
Activities affect
Quality of Life and
Quality of Care*

Be Active, Stay Active to have
quality of life

Person-Centered Care

A Movement: A Philosophy of Care

Create health care systems that ensure every older adult receives the best evidence-based care possible, without harm, ultimately satisfied with the care received.



For related work, this graphic may be used in its entirety without requesting permission. Graphic files and guidance at ihi.org/AgeFriendly

What Matters

Know and align care with each older adult's specific health outcome goals and care preferences including, but not limited to, end-of-life care, and across settings of care.

Medication

If medication is necessary, use Age-Friendly medication that does not interfere with What Matters to the older adult, Mobility, or Mentation across settings of care.

Mentation

Prevent, identify, treat, and manage dementia, depression, and delirium across settings of care.

Mobility

Ensure that older adults move safely every day in order to maintain function and do What Matters.

**"We're past just trying to fill time,"
says Natalie Davis, CEO and co-founder
of United States of Care,
a Washington, D.C.-based
health care advocacy organization.
"We want to enrich their lives."**

Music Enriches Lives



The Power of Music

Enrichment Activities

- Celebrity chef night- a well-known local
- Virtual Reality- Travel and visit a unique place
- Bubble Machines, Fiber Optic light tubes
- Karaoke Night
- Local Artist or Musician
- Tour of the Town or Countryside
- Knitting booties or making 'Mother's Day' cards for the new moms in the local hospital.
- Art therapy
- Name that tune
- Google Earth
- My Reef 3D [Reef Video](#)
- Gardening App- Flower Garden
- Luminosity- Brain Game App
- Group Wordal
- Comedy Skits
- Halloween Sensory Guessing Game
- Calming Flower Garden Tour: <https://www.youtube.com/watch?v=A6rRn9jN-bw>

PIP- Life Enrichment Interventions

PIP Team Members:

Staff Name	Title		
	ADM		
	Activities Coordinator		
	DON		

PIP Team Project:

Quality Measure of Focus	Baseline Rate of QM	Improvement Goal for QM	Goal Rate	Date to reach the goal rate
Life Enrichment		State Rate		02/28/2025

Goal Monitoring:

Current Date	Current Rate	Current Date	Current Rate	Current Date	Current Rate
11/01/2024	30%	11/01/2024	30%		
12/15/2024	50%				
01/31/2024	75%				

Interventions: The following are the interventions Implemented:

Start Date	Intervention Description	Intervention Notes	Outcome/Results
11/01/2024	Survey Residents for Activities of Interest Rate their top 5	Multidisciplinary Team (include Activity Coordinator)	
12/15/2024	Identify activities, identify involvement goals	Run CASPER Quality Measures Report – Monitor Improvement Talk with team about what they have learned from surveying residents about activities	
01/18/2025	Individual Care Plans		
01/18/2025	Identify What Matters Most to each Resident		

Outcomes: Use the table below to document what has worked, what has not worked, or lessons learned.

Intervention Successes	Intervention Barriers	Lessons learned



Making a Quality Difference

Measure Description	CMS ID	Data	Num	Denom	Facility Observed Percent	Facility Adjusted Percent	Comparison Group State Average	Comparison Group National Average	Comparison Group National Percentile
Hi-risk/Unstageable Pres Ulcer (L)	N015.03	C	2	20	10.0%	10.0%	10.0%	9.1%	62
Phys restraints (L)	N027.02	C	0	45	0.0%	0.0%	0.3%	0.2%	0
Falls (L)	N032.02	C	26	45	57.8%	57.8%	52.1%	46.3%	78 *
Falls w/Maj Injury (L)	N013.02	C	1	45	2.2%	2.2%	4.8%	3.6%	37
Antipsych Med (S)	N011.02	C	2	8	25.0%	25.0%	2.8%	2.2%	99 *
Antipsych Med (L)	N031.03	C	1	37	2.7%	2.7%	15.0%	14.4%	7
Antianxiety/Hypnotic Prev (L)	N033.02	C	1	18	5.6%	5.6%	8.4%	6.3%	57
Antianxiety/Hypnotic % (L)	N036.02	C	11	34	32.4%	32.4%	24.3%	19.7%	88 *
Behav Sx affect Others (L)	N034.02	C	8	41	19.5%	19.5%	17.2%	20.6%	56
Depress Sx (L)	N030.02	C	2	41	4.9%	4.9%	4.8%	7.5%	65
UTI (L)	N024.02	C	0	27	0.0%	0.0%	3.7%	2.8%	0
Cath Insert/Left Bladder (L)	N026.03	C	1	27	3.7%	2.9%	2.6%	2.1%	74
Lo-Risk Lose B/B Con (L)	N025.02	C	4	8	50.0%	50.0%	38.1%	47.3%	58
Excess Wt Loss (L)	N029.02	C	4	17	23.5%	23.5%	6.0%	8.5%	97 *
Incr ADL Help (L)	N028.02	C	9	31	29.0%	29.0%	16.2%	17.2%	89 *
Move Indep Worsens (L)	N035.03	C	1	5	20.0%	26.5%	21.0%	27.2%	52
Improvement in Function (S)	N037.03	C	1	4	25.0%	29.6%	69.4%	70.8%	4 *

Measure Description	CMS ID	Numerator	Denominator	Facility Observed Percent	Facility Adjusted Percent	National Average
Pressure Ulcer/Injury ¹	S038.02	4	46	8.7%	10.3%	2.9%

¹ The Changes in Skin Integrity Post-Acute Care: Pressure Ulcer/Injury (S038.02) measure is calculated using the SNF QRP measure specifications v3.0 addendum and is based on 12 months of data (01/01/2020 - 12/31/2020).

Engagement, involvement and [connection](#) with others are key, as is meaningfulness.

Halloween Parties



Halloween Activities

- <https://www.tiktok.com/@thecanopyatazealegrove/video/7156989702007065902?lang=en>
- <https://www.tiktok.com/@tlclivingcommunity/video/7296846630257544491>
- <https://www.tiktok.com/@hillsidemedicallodge/video/7295427660535139615>
- <https://www.facebook.com/VT/videos/the-most-wholesome-nursing-home-games/3264654287124377/>



A Case to Consider- Moments of Momentum

- Activity Participation has not returned to normal since COVID.
- What interventions would you suggest?
 - Survey Residents
 - Survey Staff
 - Have a contest for best activity suggestion among staff.
 - Incorporate Outdoor as well as Indoor
 - Engage your Community

Continuity of Care



Connect to the state Health Information Exchange (HIE)

- Funding available now through Oklahoma legislation.
- \$30 million appropriated for connection costs.
- These funds are limited- when they are gone... their gone.
- Connection fee from Point Click Care and other LTC EHRs is covered.
- Based on average daily census



Join us at Tellers on December 3rd 3-6
to address Continuity of Care- Quality Improvement



Dawn Jelinek
Senior Clinical Quality Consultant

OFMQ- GWEP- OkDCN

Age-Friendly LTC and Clinical Practices

djelinek@ofmq.com

405-651-4796

